

Risk Management Center Training DLS-107

Decomposing Potential Failure Modes
and Constructing Event Trees for Dam
and Levee Risk Assessments



US Army Corps
of Engineers®
Dam and Levee
Safety Programs

Course Overview

Explore how the U.S. Army Corps of Engineers (USACE) Risk Management Center (RMC) decomposes potential failure modes into discrete events and constructs event tree models to better understand potential failure mode progression and assess risk through Boolean logic. An event tree is a graphical depiction of the sequence of events that lead to failure or breach. It is the most common approach for estimating dam and levee safety risks.

Learning Objectives

By the end of the training, participants will have the expertise needed to:

- Explain and demonstrate the process of decomposing a potential failure mode into discrete events.
- Support the risk estimation of a potential failure mode through the construction, depiction, and analysis of event trees.
- Define and understand the role of project event trees in risk analysis and their construction process.

FEATURES

- Training with USACE Experts
- Hands-on practice constructing event trees for dam and levee risk assessments
- Collaboration with other engineers and scientists

Target Audience

Journeyman engineers and scientists with 5-15 years of experience involved with semi-quantitative or quantitative risk assessments for dam and levee safety.

Format

Virtual. This course will include lectures and demonstrations from USACE experts as well as hands-on exercises with event trees. A workbook of required materials and online resources will be provided to participants. Participants must join by computer.

Contact & Registration



Lead Instructor

Adam Gohs, P.E.



Prerequisites

DLS-104, Best Practices in Dam & Levee Safety Risk Analysis, is strongly recommended but not required to participate in this course.



Level

Fundamental (100 series)

Courses at this level focus on defining a basic survey of concepts and content. Fundamental courses are considered introductory and do not require prerequisites.



Professional Development Hours (PDH)

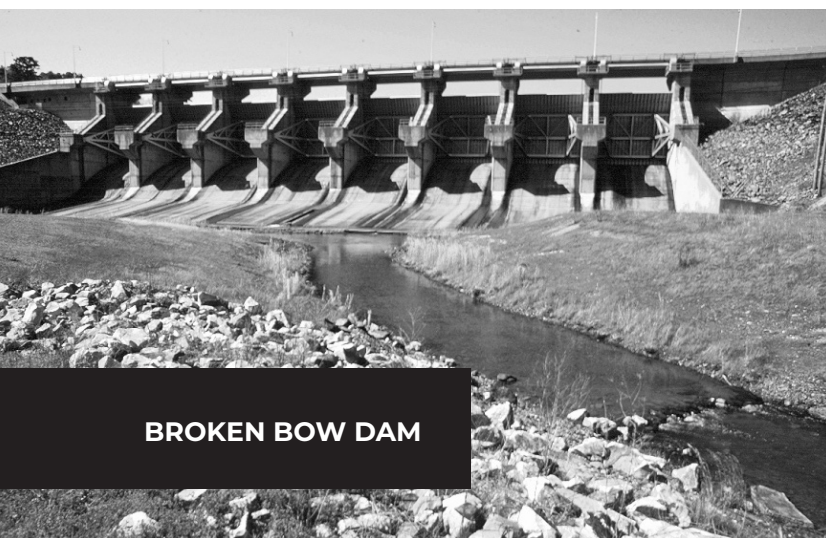
5 PDHs



Registration & More Information

(Registration subject to availability and is not guaranteed)

www.rmc.usace.army.mil/training



BROKEN BOW DAM